

2013 PLS-CADD Advanced Training and User Group

## Multiple Alignments & Stringing

by

Jesse Kohler, P.E.

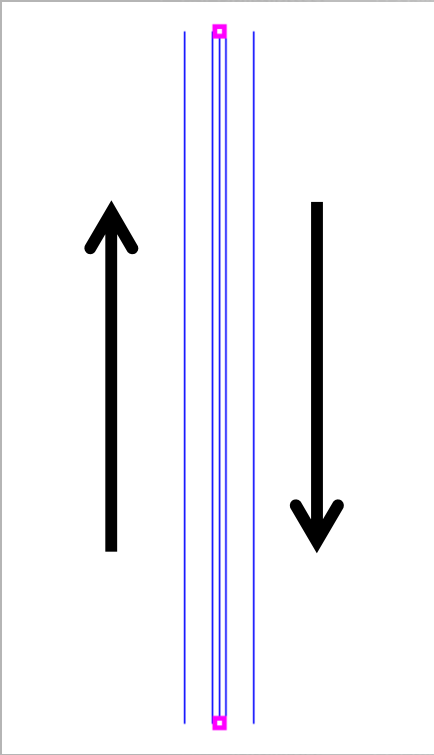
Power Line Systems, Inc.

# The Golden Rule

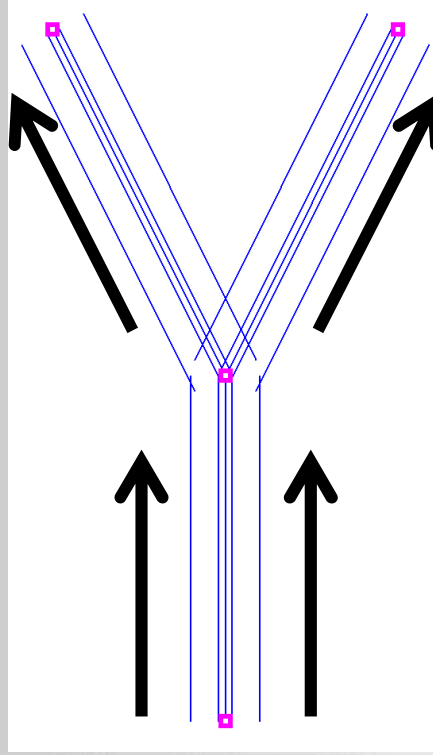
- You can only string to **ascending** stations
- Tips:
  - Display true structure numbers
  - Order of alignments dictate station
  - Changes beforehand much easier than later
  - Think what the sheets view will look like
  - Alignment numbers / Entity info / Status bar

# Types of Alignments

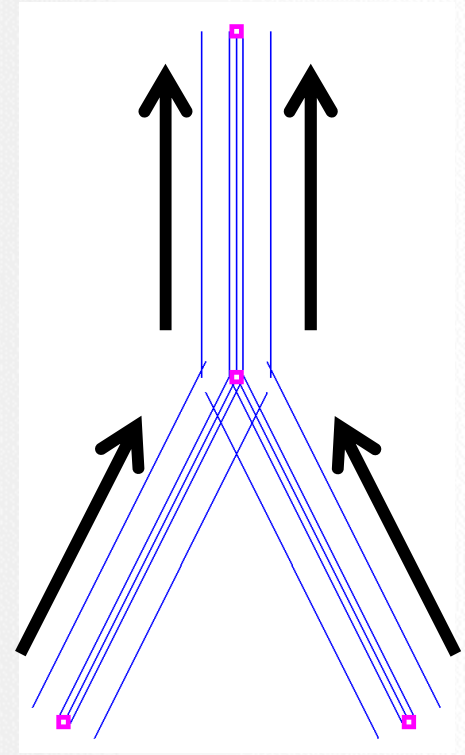
- Single Alignments (independents)



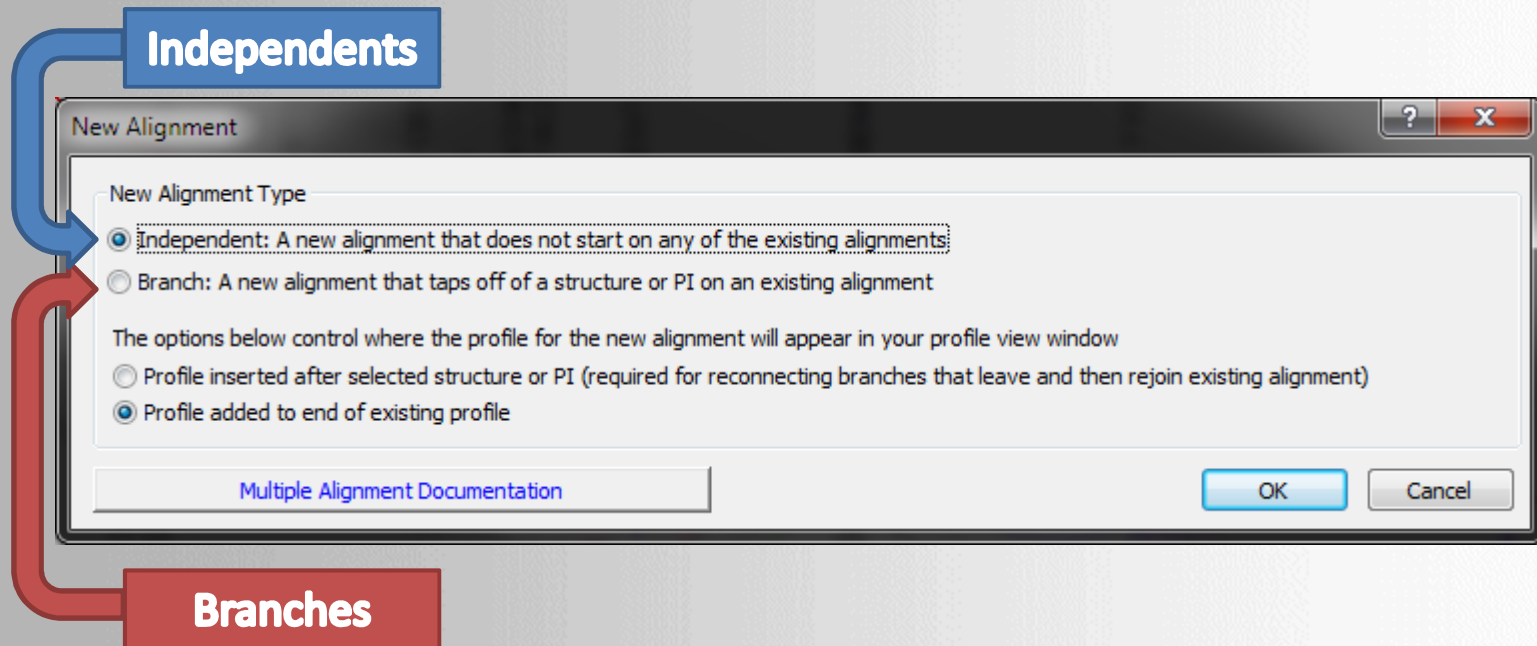
- Diverging Alignments (branches)



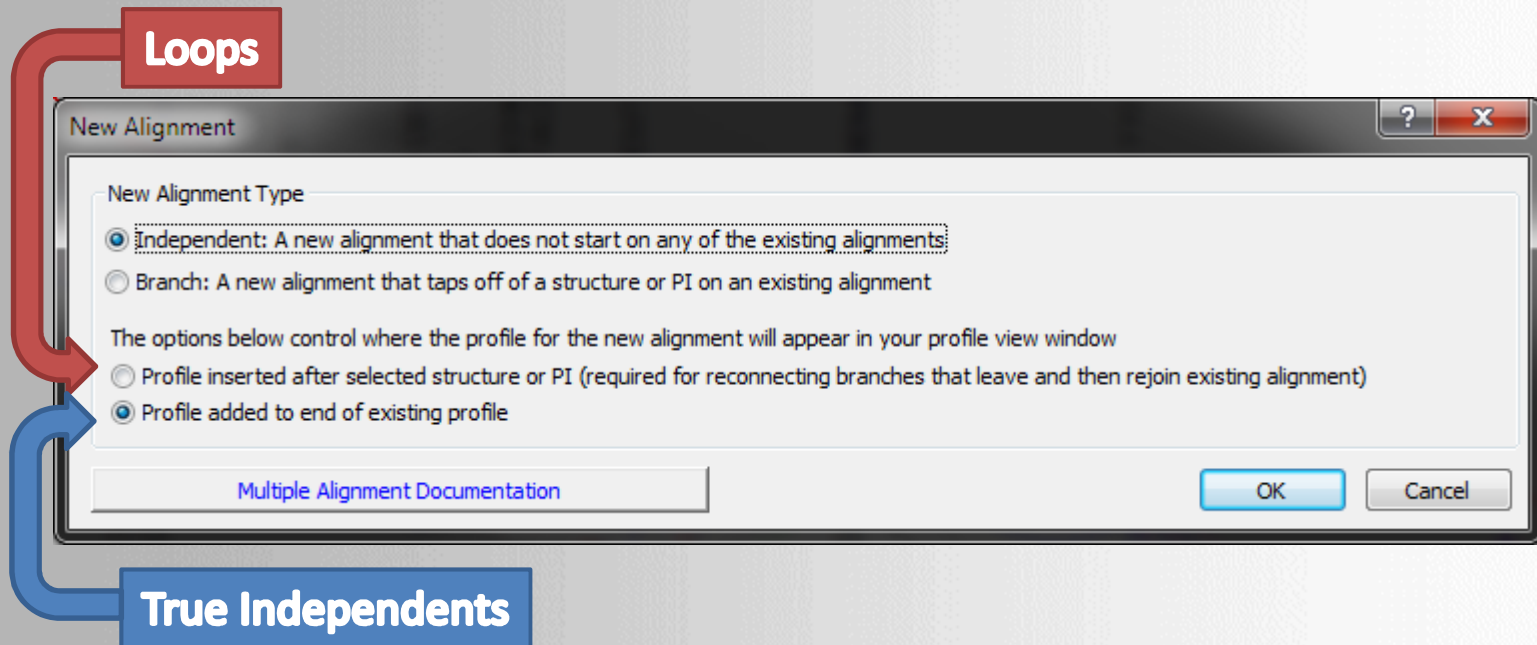
- Converging Alignments (loops)



Wait... I thought there were only 2 types of alignments!!!

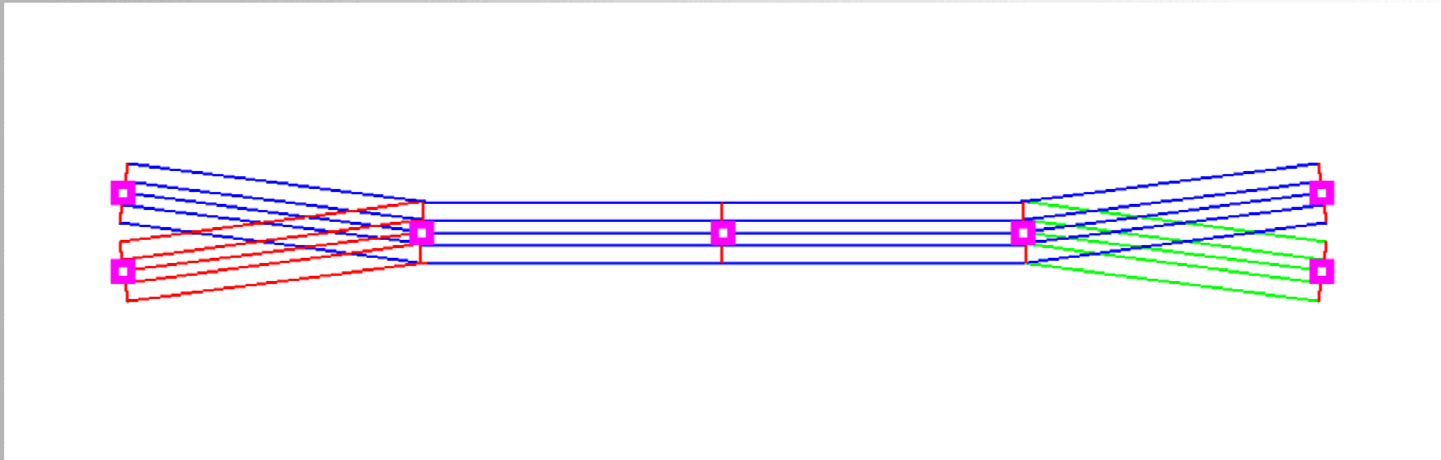


# It Depends Where The Profile Is Inserted



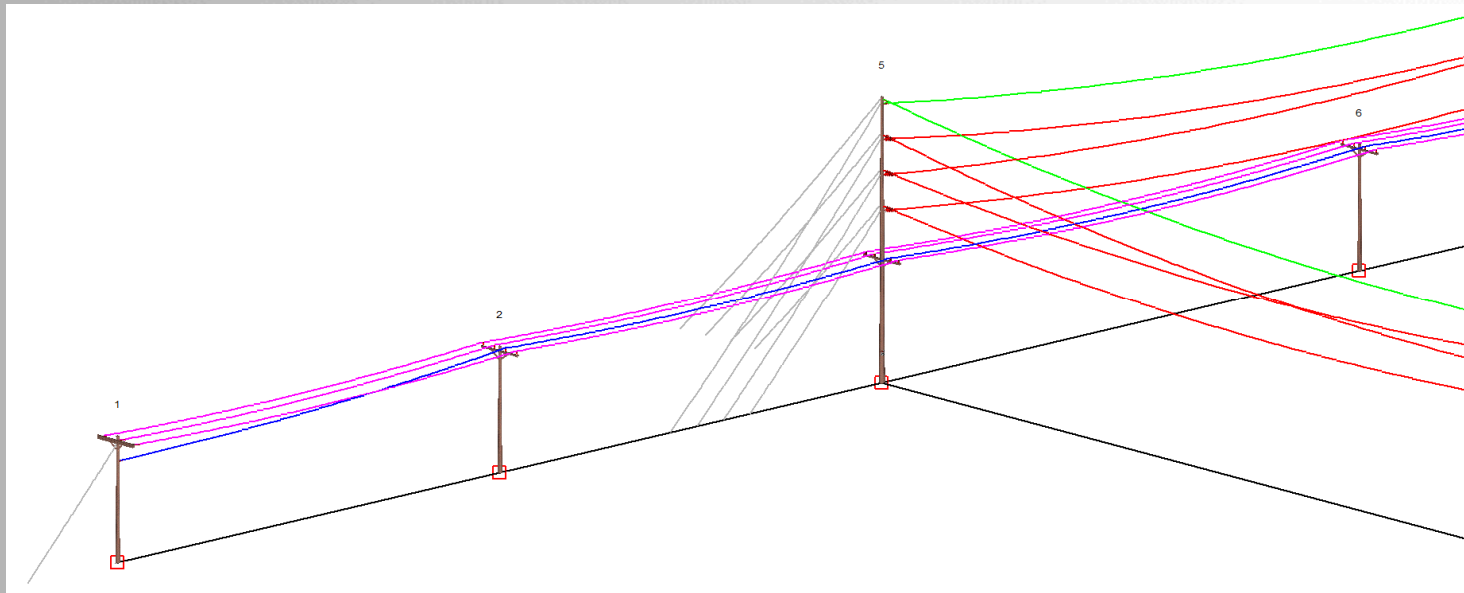
# Simple Branch & Loop Example

- Double Circuit Transmission into 2 Different Substation Bays



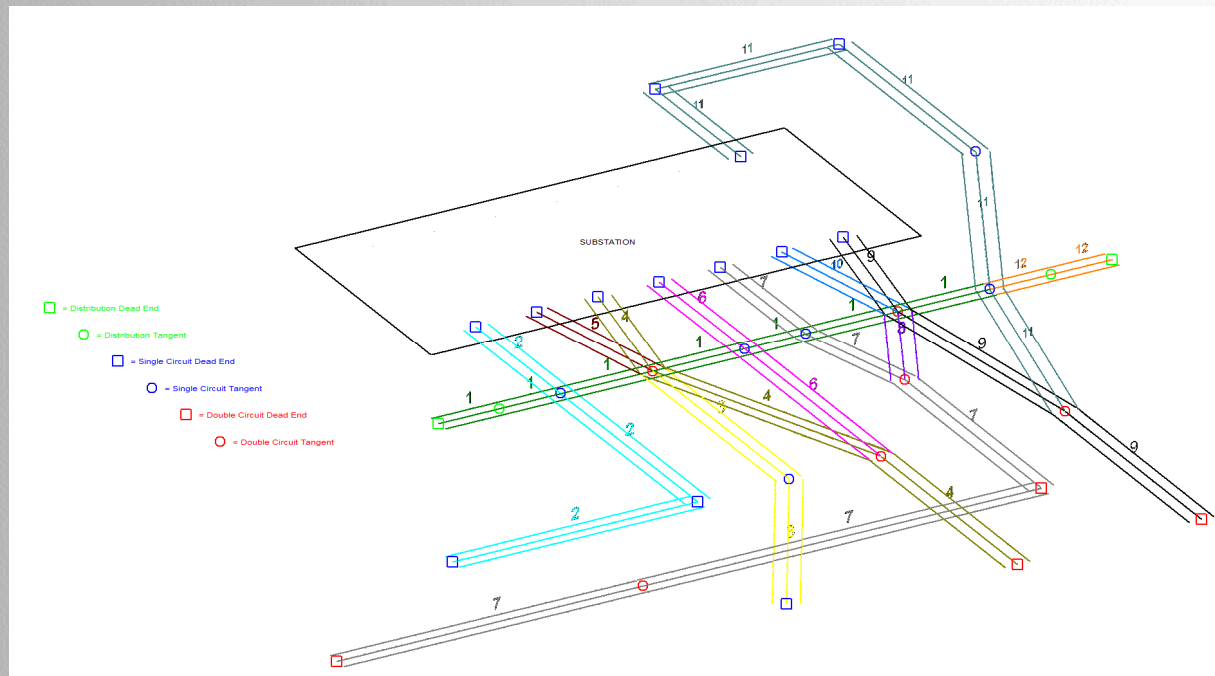
# Simple Loop Example

- Perpendicular Distribution Line Connecting To Transmission Line via a Suspension Connection



# Complicated Substation

- An Elaborate Combination of Independent Alignments, Branches, and Loops.





# Power Line Systems

---

IT'S ALL ABOUT YOUR POWER LINES

Advanced Sag & Tension

IEC

FAC 008/009

NESC

Materials Management

LiDAR Modeling

# PLS-CADD<sup>®</sup>

CSA

Distribution

Structural Analysis

Pole Analysis

CENELEC

NERC Ratings

Transmission

Line

Optimization

Project Estimating

## Questions?

FAC 003

ASCE

Joint Use

PLS-POLE

Vegetation Management

## **POWER LINE<sup>®</sup>**

1000+ Users in 100+ Countries

Storm Hardening

S Y S T E M S · I N C ·

IEEE

Line Ratings

Madison, Wisconsin 53705, USA

# TOWER

Drafting

Phone: 608-238-2171 Fax: 608-238-9241

info@powline.com

www.powline.com

---

IT'S THE SOLUTION