

2017 PLS-CADD Advanced Training and User Group

Automating Material Management

by

Johnny Doll

Louisville Gas & Electric and Kentucky Utilities

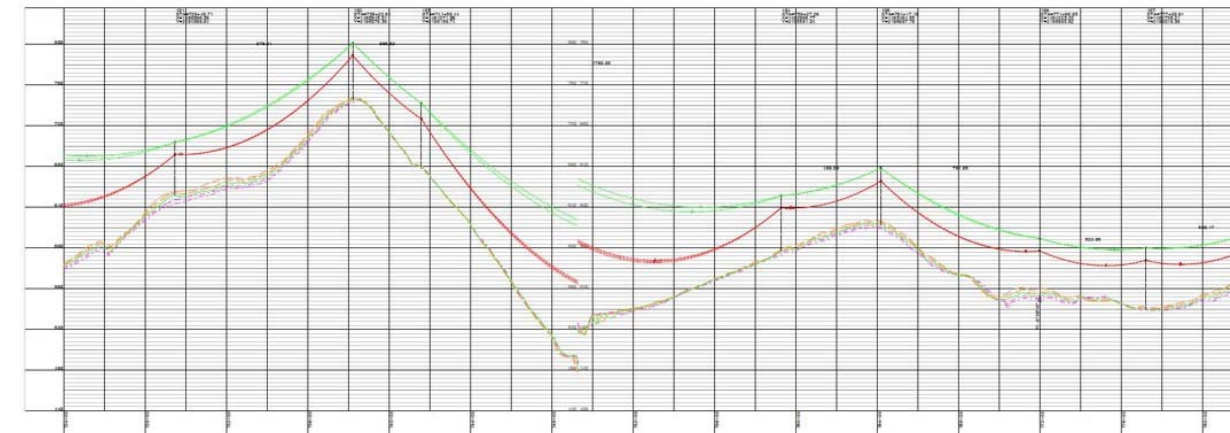
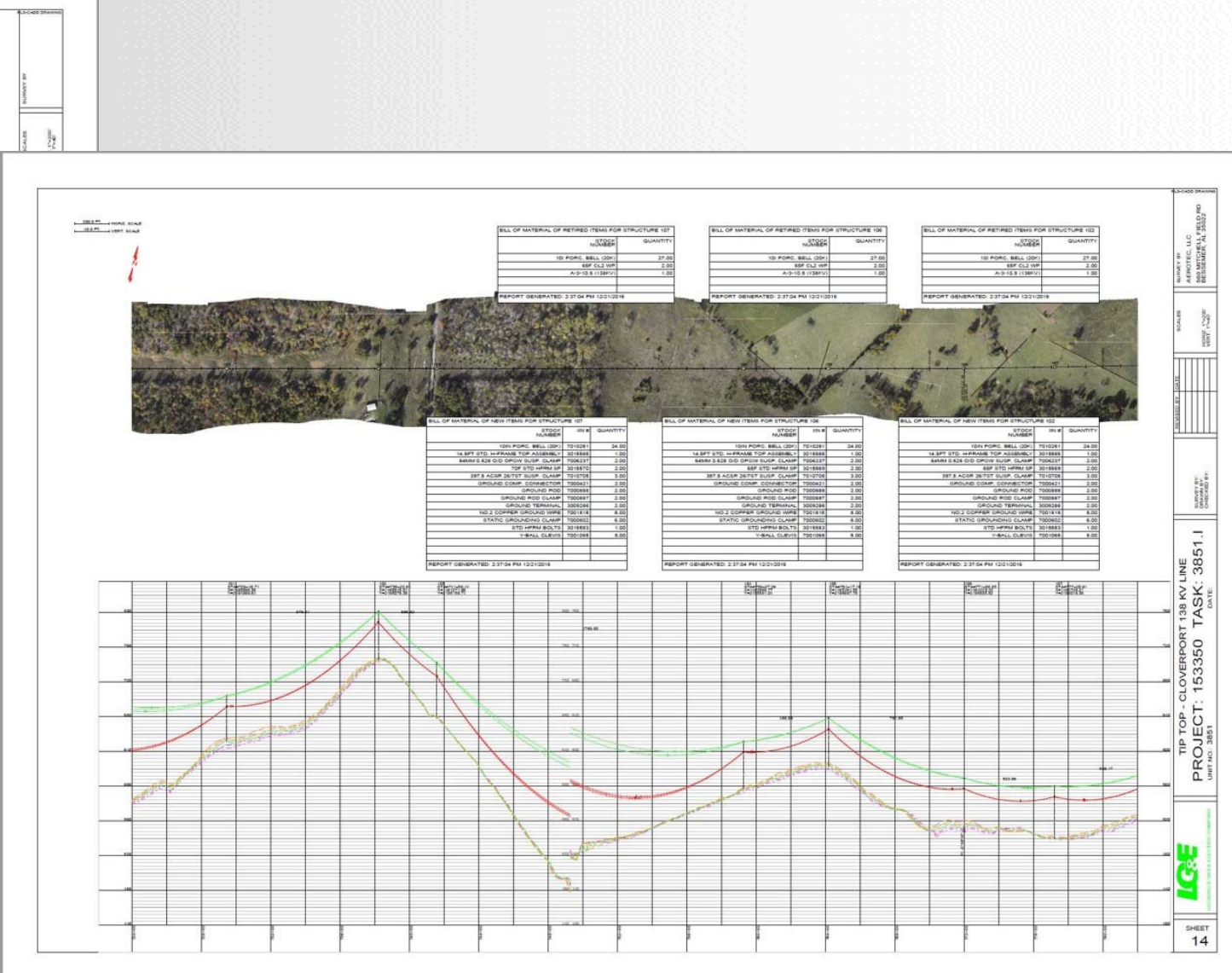
Introduction

- Automate BOM Generation
- Automate BOM Updating
- Consistent BOM and Construction Prints
- Enhance GIS Interface
- Track and Report On Material Across System

The Final Product Full Bill of Material

IN #	DESCRIPTION	STOCK NUMBER	QUANTITY
3010927	1/2"x3/4" BOLT	1/2 BOLT	210.00
3023032	1/4"x1" BOLT	1/4 BOLT	70.00
3023034	1/4" FLAT WASHER	1/4 FLAT WASHER	70.00
3023033	1/4" LOCK NUT	1/4 LOCK NUT	70.00
3013828	HOLDER, TAG, 1/8" ALUMINUM PLATE, 12", 2 TAG	2 TAG HOLDER	12.00
3014253	HOLDER, TAG, 1/8" ALUMINUM PLATE, 3 TAG	3 TAG HOLDER	23.00
7010261	INSULATOR,SUSPENSION,10" PORCELAIN,CHOCOLATE,BROWN,20K LB ULTIMATE LOAD	10IN PORC. BELL (20K)	840.00
3015585	H FRAME STEEL STANDARD 14' 9" SPACING TOP ASSEMBLY COMPLETE (INCLUDES 2 EA IN 3015576, 1 EA IN 3015580, 1 EA IN 3015581, 1 EA IN 3015582), GALVANIZED	14.5FT STD. H-FRAME TOP ASSEMBLY	35.00
3015566	H FRAME STEEL STANDARD 15' SINGLE BOTTOM SECTION(60' POLE), GALVANIZED	60F STD HFRM SP	4.00
7005237	CLAMP,SUSPENSION,0.525-0.528 O/D,OPOW	6MM 0.528 O/D OPOW SUSP. CLAMP	70.00
3015569	H FRAME STEEL STANDARD 20' SINGLE BOTTOM SECTION(65' POLE), GALVANIZED	65F STD HFRM SP	32.00
3015570	H FRAME STEEL STANDARD 25' SINGLE BOTTOM SECTION(70' POLE), GALVANIZED	70F STD HFRM SP	32.00
3015571	H FRAME STEEL STANDARD 30' SINGLE BOTTOM SECTION(75' POLE), GALVANIZED	75F STD HFRM SP	2.00
7010010	ROD,ARMOR,PREFORMED,397.5 ACSR 267,DIA MIN. 783 MAX. 814	397.267 ARMOR ROD	105.00
7010705	CLAMP,SUSPENSION,ALUMINUM SOCKET,TO BE USED ON 266.8 ACSR 267-397 ACSR 267 WITH ARMOR RODS, 1272.0 ACSR 457 WITHOUT ARMOR RODS.	397.5 ACSR 267/ST SUSP. CLAMP	105.00
7000421	CONNECTOR,COMPRESSION,TAP,AL-2,4-2A,6-4-15TR (7NO.8AW)	GROUND COMP. CONNECTOR	70.00
7000988	ROD,GROUND,5/8"x8",BOHDED COPPER,MINIMUM 010" COPPER COATING,TO BE USED ON GROUND RODS FOR POLES	GROUND ROD	70.00
7000987	CLAMP,GROUND ROD,5/8"-8-10,HEX,CU,HEAVY DUTY	GROUND ROD CLAMP	70.00
7000290	CONNECTOR,COMPRESSION,T-2 HOLE TERMINAL 148 TO 286 AL ORANGE OPOW...	GROUND TERMINAL	70.00
7001815	CONDUCTOR,OH WIRE,2,CW,BARE,SOLID,40% CONDUCTIVITY,50 LB SPOOL (299') CON/VERSION: FEET YOU WANT DIVIDED BY 5.38 = POUNDS TO ORDER)	NO 2 COPPER GROUND WIRE	260.00
3013809	TAG, 6"x5" NUMBER "0", BLACK CHARACTER ON YELLOW REFLECTIVE LEXAN BASE, WITH 4 HOLES ON ROUND CORNERS, POLE AND TOWNER FIELD MARKING	NUMBER PLATE 0	5.00
3013810	TAG, 6"x5" NUMBER "1", BLACK CHARACTER ON YELLOW REFLECTIVE LEXAN BASE, WITH 4 HOLES ON ROUND CORNERS, POLE AND TOWNER FIELD MARKING	NUMBER PLATE 1	28.00
3013811	TAG, 6"x5" NUMBER "2", BLACK CHARACTER ON YELLOW REFLECTIVE LEXAN BASE, WITH 4 HOLES ON ROUND CORNERS, POLE AND TOWNER FIELD MARKING	NUMBER PLATE 2	8.00
3013812	TAG, 6"x5" NUMBER "3", BLACK CHARACTER ON YELLOW REFLECTIVE LEXAN BASE, WITH 4 HOLES ON ROUND CORNERS, POLE AND TOWNER FIELD MARKING	NUMBER PLATE 3	7.00
3013813	TAG, 6"x5" NUMBER "4", BLACK CHARACTER ON YELLOW REFLECTIVE LEXAN BASE, WITH 4 HOLES ON ROUND CORNERS, POLE AND TOWNER FIELD MARKING	NUMBER PLATE 4	8.00
3013814	TAG, 6"x5" NUMBER "5", BLACK CHARACTER ON YELLOW REFLECTIVE LEXAN BASE, WITH 4 HOLES ON ROUND CORNERS, POLE AND TOWNER FIELD MARKING	NUMBER PLATE 5	9.00
3013815	TAG, 6"x5" NUMBER "6", BLACK CHARACTER ON YELLOW REFLECTIVE LEXAN BASE, WITH 4 HOLES ON ROUND CORNERS, POLE AND TOWNER FIELD MARKING	NUMBER PLATE 6	13.00
3013816	TAG, 6"x5" NUMBER "7", BLACK CHARACTER ON YELLOW REFLECTIVE LEXAN BASE, WITH 4 HOLES ON ROUND CORNERS, POLE AND TOWNER FIELD MARKING	NUMBER PLATE 7	7.00
3013817	TAG, 6"x5" NUMBER "8", BLACK CHARACTER ON YELLOW REFLECTIVE LEXAN BASE, WITH 4 HOLES ON ROUND CORNERS, POLE AND TOWNER FIELD MARKING	NUMBER PLATE 8	8.00
7000002	CLAMP,GROUND TRANSFORMER TANK,BRZ,#8SLD TO 3/8 STR 1/2"x 13 THREAD STUD	STATIC GROUNDING CLAMP	210.00
3015583	H FRAME STEEL STANDARD HARDWARE BUCKET O' BOLTS,GALVANIZED	STD HFRM BOLTS	35.00
7001065	BALL,Y-CLEVIS,30000 LB,52-3/82-5	Y-BALL CLEVIS	175.00
MATERIAL SUBTOTAL			
LABOR SUBTOTAL			
TOTAL			

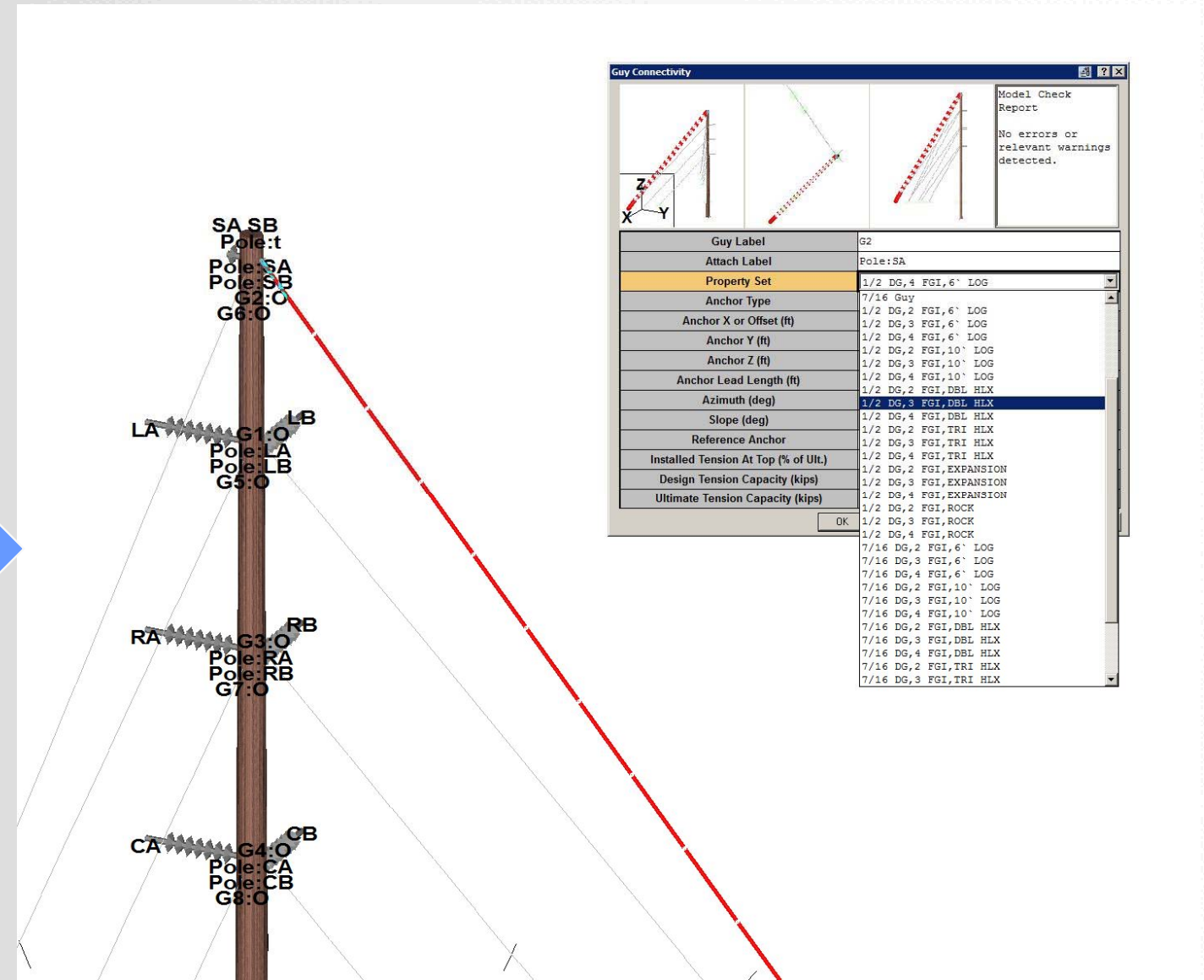
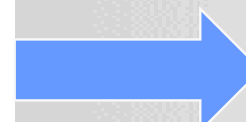
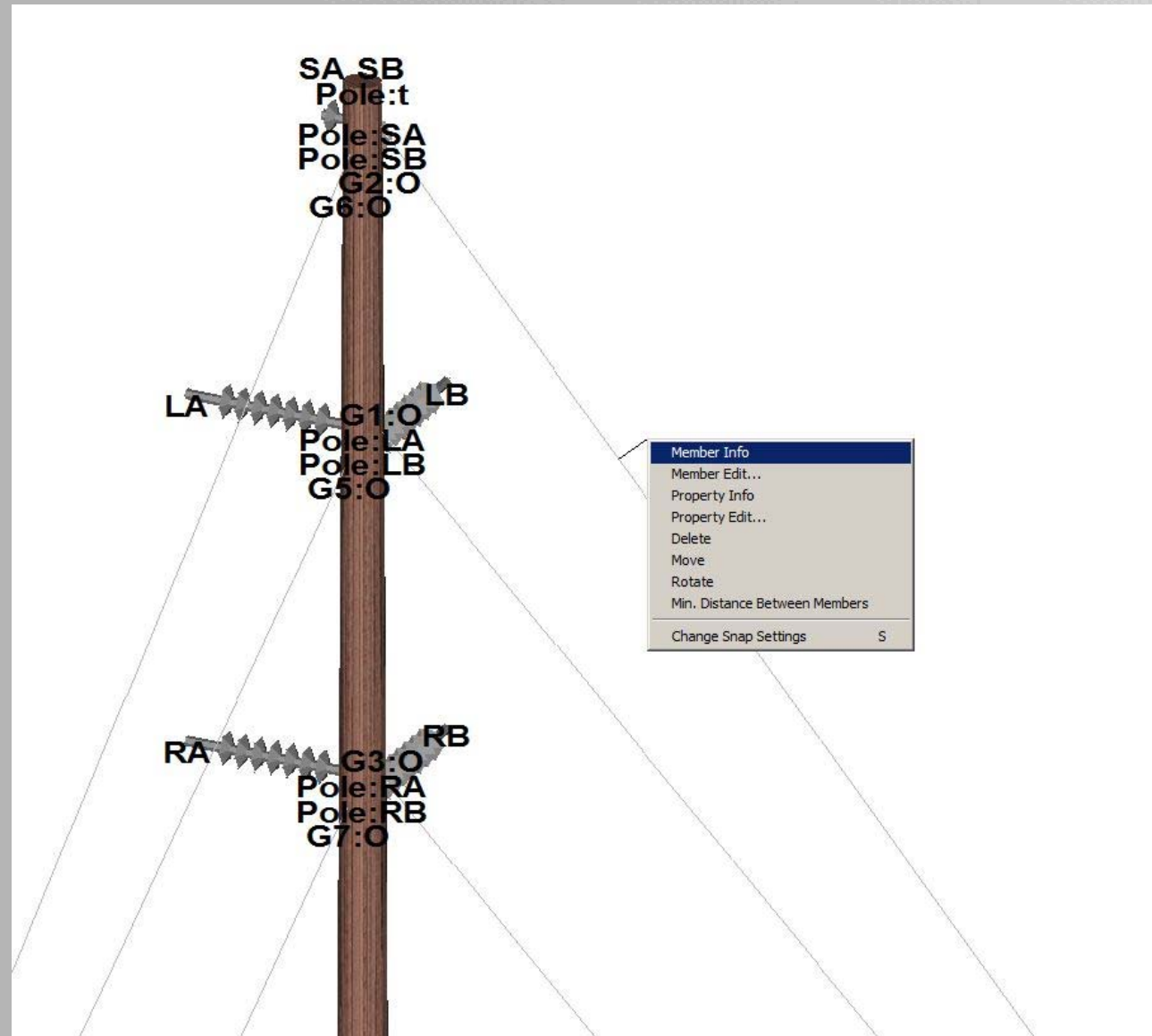
REPORT GENERATED: 10:30:54 AM 2/7/2017



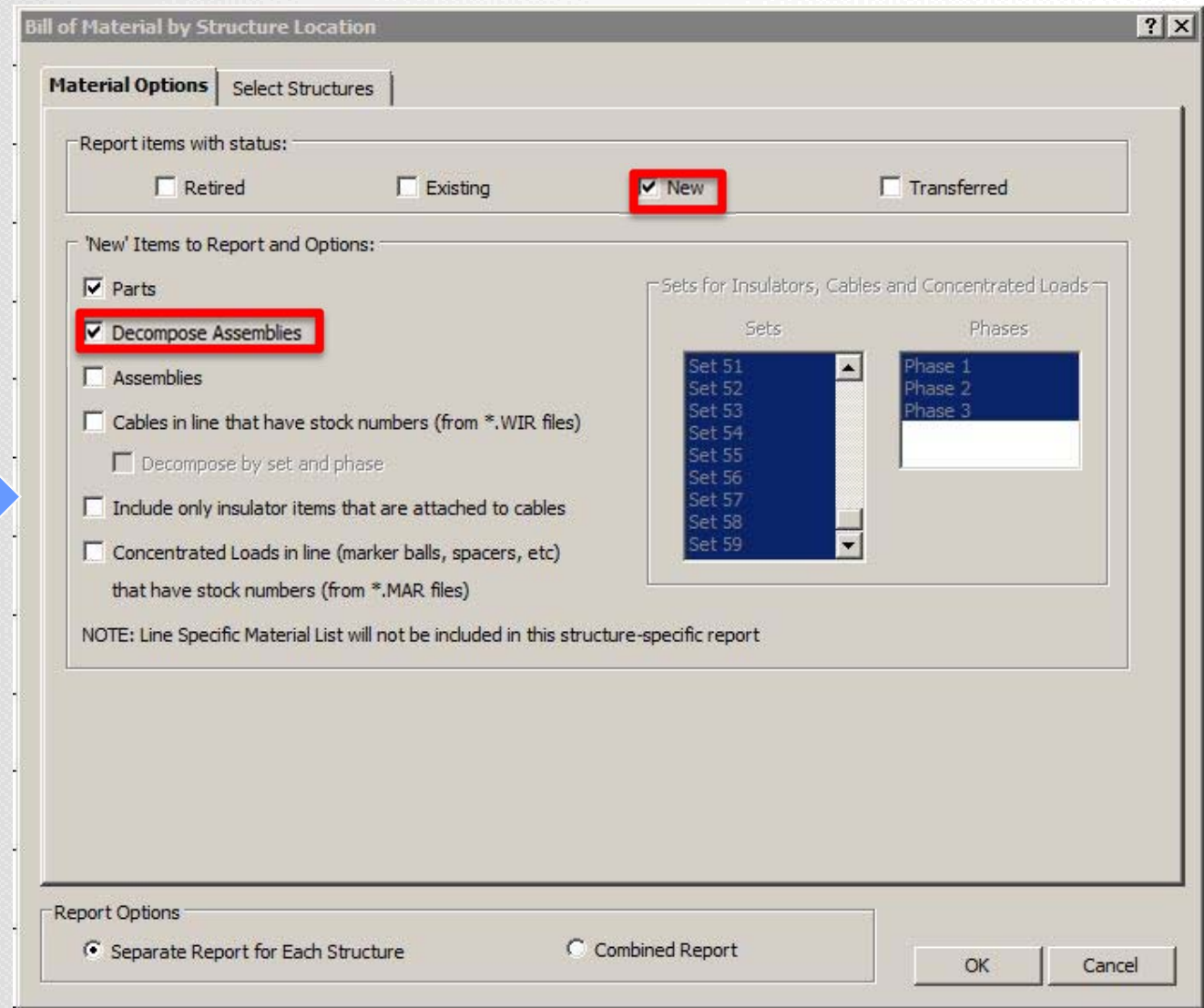
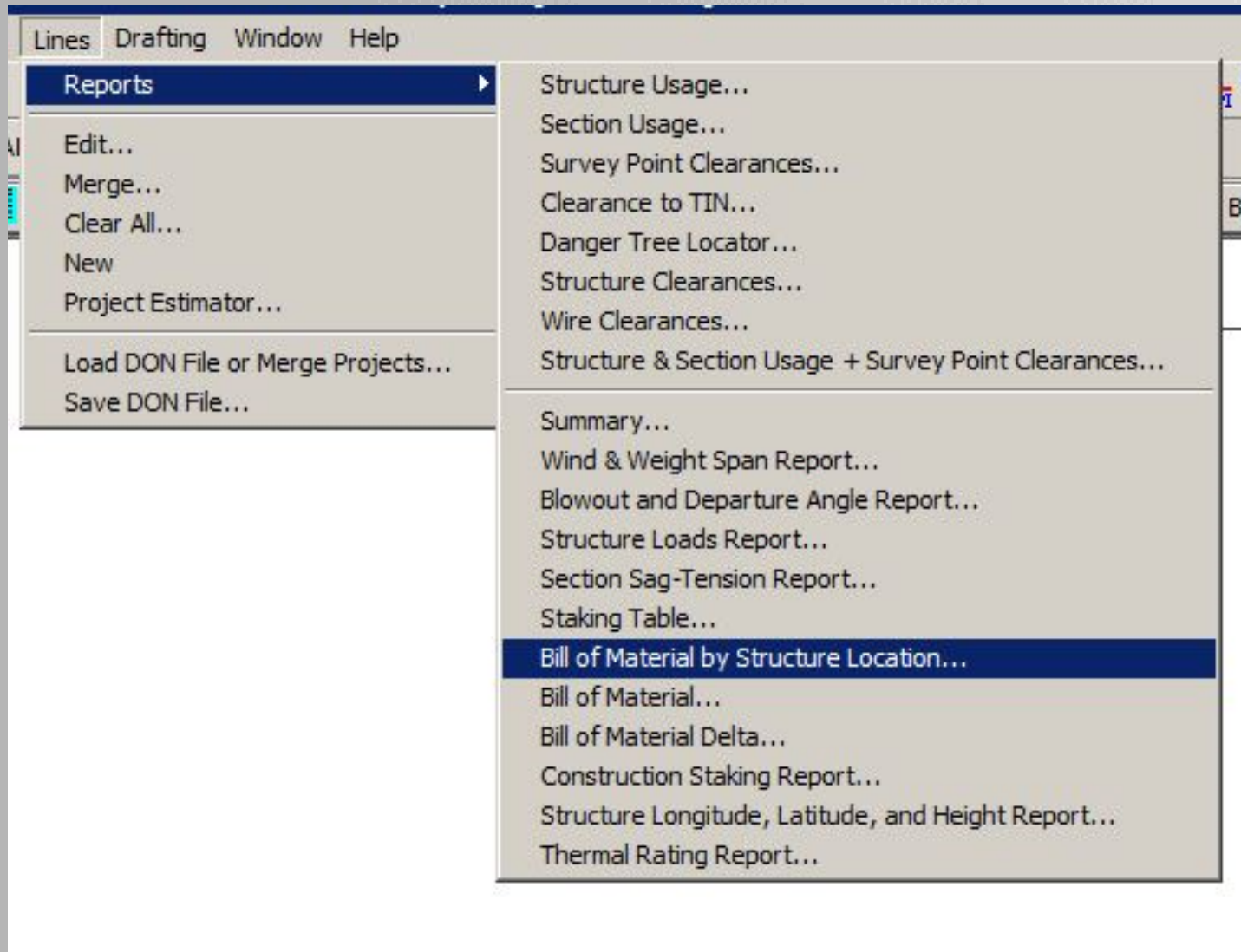
SHEET NO. 3851
 PROJECT: 153350 TASK: 3851.1
 DATE: 2/7/2017
 SHEET 14
 IGE

The Process

Select Assembly from Property Set Dropdown



Re-Run BOM Report



Re-Run BOM Report

BILL OF MATERIAL OF NEW ITEMS FOR STRUCTURE 25			
	STOCK NUMBER	IIN #	QUANTITY
	1/2 BOLT	3010927	6.00
	1/4 BOLT	3023032	2.00
	1/4 FLAT WASHER	3023034	2.00
	1/4 LOCK NUT	3023033	2.00
	2 TAG HOLDER	3013828	1.00
	10IN PORC. BELL (20K)	7010251	24.00
	14.5F STD HFRM CROSSANGLE	3015580	1.00
	14.5F STD HFRM CROSSARM	3015581	1.00
	14.5F STD HFRM X-BRACE	3015582	2.00
	64MM 0.528 O/D OPGW SUSP. CLAMP	7006237	2.00
	70F STD HFRM SP	3015570	2.00
	397.5 ACSR 26/7ST SUSP. CLAMP	7010705	3.00
	GROUND COMP. CONNECTOR	7000421	2.00
	GROUND ROD	7000888	2.00
	GROUND ROD CLAMP	7000887	2.00
	GROUND TERMINAL	3009286	2.00
	NO.2 COPPER GROUND WIRE	7001815	8.00
	NUMBER PLATE 2	3013811	1.00
	NUMBER PLATE 5	3013814	1.00
	STATIC GROUNDING CLAMP	7000602	6.00
	Y-BALL CLEVIS	7001065	3.00
REPORT GENERATED: 4:35:02 PM 6/2/2017			



BILL OF MATERIAL OF NEW ITEMS FOR STRUCTURE 25			
	STOCK NUMBER	IIN #	QUANTITY
	1/2 BOLT	3010927	6.00
	1/4 BOLT	3023032	2.00
	1/4 FLAT WASHER	3023034	2.00
	1/4 LOCK NUT	3023033	2.00
	2 TAG HOLDER	3013828	1.00
	10IN PORC. BELL (30K)	7001285	24.00
	14.5F STD HFRM CROSSANGLE	3015580	1.00
	14.5F STD HFRM CROSSARM	3015581	1.00
	14.5F STD HFRM X-BRACE	3015582	2.00
	64MM 0.528 O/D OPGW SUSP. CLAMP	7006237	2.00
	70F STD HFRM SP	3015570	2.00
	954 ACSR 45/7ST SUSP. CLAMP	7010704	3.00
	GROUND COMP. CONNECTOR	7000421	2.00
	GROUND ROD	7000888	2.00
	GROUND ROD CLAMP	7000887	2.00
	GROUND TERMINAL	3009286	2.00
	NO.2 COPPER GROUND WIRE	7001815	8.00
	NUMBER PLATE 2	3013811	1.00
	NUMBER PLATE 5	3013814	1.00
	STATIC GROUNDING CLAMP	7000602	6.00
	Y-BALL CLEVIS	7001065	3.00
REPORT GENERATED: 4:40:51 PM 6/2/2017			

Develop Comprehensive Parts List (.prt file)

Parts Editor

From file: r:\ge\69\6617\pls-cadd\libraries\ku_material(2016).prt

Notes:

	Stock Number	Item Description	Material Unit Cost	Unit of Measure	Install Labor Unit Cost	Retire Labor Unit Cost	Transfer Labor Unit Cost	Rule to Apply	Dependent Cable Stock Number	Variable Part Stock Number	Show in Structure Label	IIN #
1181	954 ACSR 54/7ST SUSP. CLAMP	CLAMP,SUSPENSION,ALUMINUM SOCKET,TO BE USED ON 556.	28.6500	Each	0.0000	0.0000	0.0000	Cable Stock Number =	954 ACSR 54/7ST WIRE	COND. SUSPENSION CLAMP	Yes	7010704
1182	3/8 EHS 7ST SUSP. CLAMP	CLAMP,SUSPENSION,3/8",7/16" HS STEEL,7 STRAND,DUCTI	32.7296	Each	0.0000	0.0000	0.0000	Cable Stock Number =	3/8 EHS 7ST WIRE	STATIC SUSPENSION CLAMP	Yes	7003877
1183	3/8 HS 7ST SUSP. CLAMP	CLAMP,SUSPENSION,3/8",7/16" HS STEEL,7 STRAND,DUCTI	32.7296	Each	0.0000	0.0000	0.0000	Cable Stock Number =	3/8 EHS 7ST WIRE	STATIC SUSPENSION CLAMP	Yes	7003877
1184	500 HDCU 7ST DE STRAIN CLAMP	CLAMP,STRAIN,397-1272 ACSR (WIDE RANGE),DE,AL,NONE	89.3300	Each	0.0000	0.0000	0.0000	Cable Stock Number =	500 HDCU 7ST WIRE	DE COND. CLAMP	Yes	7010152
1185	1024.5 ACAR 24/13ST SUSP. CLAMP	CLAMP,SUSPENSION,ALUMINUM SOCKET,TO BE USED ON 556.	28.6500	Each	0.0000	0.0000	0.0000	Cable Stock Number =	1024.5 ACAR 24/13ST WIRE	COND. SUSPENSION CLAMP	Yes	7010704
1186	1033.5 ACSR 45/7ST DE STRAIN CLAMP	CLAMP,STRAIN,397-1272 ACSR (WIDE RANGE),DE,AL,NONE	89.3300	Each	0.0000	0.0000	0.0000	Cable Stock Number =	1033.5 ACSR 45/7ST WIRE	DE COND. CLAMP	Yes	7010152
1187	1033.5 ACSR 45/7ST SUSP. CLAMP	CLAMP,SUSPENSION,ALUMINUM SOCKET,TO BE USED ON 556.	28.6500	Each	0.0000	0.0000	0.0000	Cable Stock Number =	1033.5 ACSR 45/7ST WIRE	COND. SUSPENSION CLAMP	Yes	7010704
1188	636 ACSR 24/7ST DE STRAIN CLAMP	CLAMP,STRAIN,397-1272 ACSR (WIDE RANGE),DE,AL,NONE	89.3300	Each	0.0000	0.0000	0.0000	Cable Stock Number =	636 ACSR 24/7ST WIRE	DE COND. CLAMP	Yes	7010152
1189	795 AAC 61ST DE STRAIN CLAMP	CLAMP,STRAIN,397-1272 ACSR (WIDE RANGE),DE,AL,NONE	89.3300	Each	0.0000	0.0000	0.0000	Cable Stock Number =	795 AAC 61ST WIRE	DE COND. CLAMP	Yes	7010152
1190	7N08 AW 7ST DE STRAIN CLAMP	CLAMP,STRAIN,2-2/0 ACSR,7#9-7#8 AW,DE,AL,SOCKET	36.3300	Each	0.0000	0.0000	0.0000	Cable Stock Number =	7N08 AW 7ST WIRE	DE STATIC CLAMP	Yes	7006609
1191	8M AW 7ST SUSP. CLAMP	CLAMP,SUSPENSION,2-2/0 ACSR,7#8-7#9 AW,AL,SOCKET	19.0499	Each	0.0000	0.0000	0.0000	Cable Stock Number =	8M AW 7ST WIRE	STATIC SUSPENSION CLAMP	Yes	7006610
1192	795 ACSR 45/7ST SUSP. CLAMP	CLAMP,SUSPENSION,ALUMINUM SOCKET,TO BE USED ON 556.	28.6500	Each	0.0000	0.0000	0.0000	Cable Stock Number =	795 ACSR 45/7ST WIRE	COND. SUSPENSION CLAMP	Yes	7010704
1193	8M AW 7ST DE STRAIN CLAMP	CLAMP,STRAIN,2-2/0 ACSR,7#9-7#8 AW,DE,AL,SOCKET	36.3300	Each	0.0000	0.0000	0.0000	Cable Stock Number =	8M AW 7ST WIRE	DE STATIC CLAMP	Yes	7006609
1194	795 ACSR 26/7ST SUSP. CLAMP	CLAMP,SUSPENSION,ALUMINUM SOCKET,TO BE USED ON 556.	28.6500	Each	0.0000	0.0000	0.0000	Cable Stock Number =	795 ACSR 26/7ST WIRE	COND. SUSPENSION CLAMP	Yes	7010704
1195	795 ACSR 26/7ST DE STRAIN CLAMP	CLAMP,STRAIN,397-1272 ACSR (WIDE RANGE),DE,AL,NONE	89.3300	Each	0.0000	0.0000	0.0000	Cable Stock Number =	795 ACSR 26/7ST WIRE	DE COND. CLAMP	Yes	7010152
1196	7N08 AW 7ST SUSP. CLAMP	CLAMP,SUSPENSION,2-2/0 ACSR,7#8-7#9 AW,AL,SOCKET	19.0499	Each	0.0000	0.0000	0.0000	Cable Stock Number =	7N08 AW 7ST WIRE	STATIC SUSPENSION CLAMP	Yes	7006610
1197	954 ACSR 54/7ST DE STRAIN CLAMP	CLAMP,STRAIN,397-1272 ACSR (WIDE RANGE),DE,AL,NONE	89.3300	Each	0.0000	0.0000	0.0000	Cable Stock Number =	954 ACSR 54/7ST WIRE	DE COND. CLAMP	Yes	7010152
1198	795 ACSR 45/7ST DE STRAIN CLAMP	CLAMP,STRAIN,397-1272 ACSR (WIDE RANGE),DE,AL,NONE	89.3300	Each	0.0000	0.0000	0.0000	Cable Stock Number =	795 ACSR 45/7ST WIRE	DE COND. CLAMP	Yes	7010152
1199	795 AAC 37ST SUSP. CLAMP	CLAMP,SUSPENSION,ALUMINUM SOCKET,TO BE USED ON 556.	28.6500	Each	0.0000	0.0000	0.0000	Cable Stock Number =	795 AAC 37ST WIRE	COND. SUSPENSION CLAMP	Yes	7010704
1200	954 ACSR 30/19ST DE STRAIN CLAMP	CLAMP,STRAIN,397-1272 ACSR (WIDE RANGE),DE,AL,NONE	89.3300	Each	0.0000	0.0000	0.0000	Cable Stock Number =	954 ACSR 30/19ST WIRE	DE COND. CLAMP	Yes	7010152
1201	954 ACSR 30/19ST SUSP. CLAMP	CLAMP,SUSPENSION,ALUMINUM SOCKET,TO BE USED ON 556.	28.6500	Each	0.0000	0.0000	0.0000	Cable Stock Number =	954 ACSR 30/19ST WIRE	COND. SUSPENSION CLAMP	Yes	7010704
1202	954 ACSR 45/7ST SUSP. CLAMP	CLAMP,SUSPENSION,ALUMINUM SOCKET,TO BE USED ON 556.	28.6500	Each	0.0000	0.0000	0.0000	Cable Stock Number =	954 ACSR 45/7ST WIRE	COND. SUSPENSION CLAMP	Yes	7010704
1203	954 ACSR 45/7ST DE STRAIN CLAMP	CLAMP,STRAIN,397-1272 ACSR (WIDE RANGE),DE,AL,NONE	89.3300	Each	0.0000	0.0000	0.0000	Cable Stock Number =	954 ACSR 45/7ST WIRE	DE COND. CLAMP	Yes	7010152
1204	795 AAC 37ST DE STRAIN CLAMP	CLAMP,STRAIN,397-1272 ACSR (WIDE RANGE),DE,AL,NONE	89.3300	Each	0.0000	0.0000	0.0000	Cable Stock Number =	795 AAC 37ST WIRE	DE COND. CLAMP	Yes	7010152
1205	795 AAC 61ST SUSP. CLAMP	CLAMP,SUSPENSION,ALUMINUM SOCKET,TO BE USED ON 556.	28.6500	Each	0.0000	0.0000	0.0000	Cable Stock Number =	795 AAC 61ST WIRE	COND. SUSPENSION CLAMP	Yes	7010704
1206	7N09 AW 7ST DE STRAIN CLAMP	CLAMP,STRAIN,2-2/0 ACSR,7#9-7#8 AW,DE,AL,SOCKET	36.3300	Each	0.0000	0.0000	0.0000	Cable Stock Number =	7N09 AW 7ST WIRE	DE STATIC CLAMP	Yes	7006609
1207	7N09 AW 7ST SUSP. CLAMP	CLAMP,SUSPENSION,2-2/0 ACSR,7#8-7#9 AW,AL,SOCKET	19.0499	Each	0.0000	0.0000	0.0000	Cable Stock Number =	7N09 AW 7ST WIRE	STATIC SUSPENSION CLAMP	Yes	7006610
1208	3AWG ACSR 6/1ST SUSP. CLAMP	CLAMP,SUSPENSION WITH SOCKET EYE, 336 AA,336 18/1 A	28.6500	Each	0.0000	0.0000	0.0000	Cable Stock Number =	3AWG ACSR 6/1ST WIRE	COND. SUSPENSION CLAMP	Yes	1158078
1209	266.8 ACSR 26/7ST WIRE	CONDUCTOR,OH,WIRE,266.8,ACSR/BARE,26/7,PARTRIDGE	0.0000	Foot	0.0000	0.0000	0.0000				Yes	7000397
1210	4.5ft HDCG DAVIT ARM	ARM,DAVIT,4'6",HEAVY DUTY STEEL,GALVANIZED,DC MOUNT	435.0000	Each	0.0000	0.0000	0.0000				Yes	3016503
1211	6.5ft HDCG DAVIT ARM	ARM,DAVIT,6'6",HEAVY DUTY STEEL,GALVANIZED,DC MOUNT	475.0000	Each	0.0000	0.0000	0.0000				Yes	3016507
1212	4.5ft HSAG DAVIT ARM	ARM,DAVIT,4'6",HEAVY DUTY STEEL,GALVANIZED,SC MOUNT	430.0000	Each	0.0000	0.0000	0.0000				Yes	3023401
1213	6.5ft HSAG DAVIT ARM	ARM,DAVIT,6'6",HEAVY DUTY STEEL,GALVANIZED,SC MOUNT	470.0000	Each	0.0000	0.0000	0.0000				Yes	3023403

Edit Assemblies... Hide Material in Line Save As... Save Cancel

Create Assemblies

Assemblies Editor

From file: r:\ge\69\6617\pls-cadd\libraries\ku_material(2016).prt

Notes:

	Stock Number	Item Description	Material Unit Cost	Unit of Measure	Quantity	Edit Parts in Assembly	Install Labor Unit Cost	Retire Labor Unit Cost	Transfer Labor Unit Cost	Show in Structure Label	IIN #	Manufacturer	Manuf
1	A-3-10.9 (SIDE GUYS) ASSEMBLY	INCLUDES (ALL NUTS, BOLTS, WASHERS, 2x CROSS ARMS, 1x BRACE)	1252.7300	Each	9	Edit Assembly...	0.0000	0.0000	0.0000	Yes			
2	7/16 SINGLE GUY SCREW ANCHOR ASSY	INCLUDES (1x SCREW ANCOR, 1x 7/16 HSS GUY WIRE, 2x 60in FIBERGLASS INSULATORS)	178.6900	Each	3	Edit Assembly...	0.0000	0.0000	0.0000	Yes			
3	69KV DE STRAIN. INS. ASSEMBLY	INCLUDES (6x INSULATOR,SUSPENSION,10",PORCELAIN,CHOCOLATE/BROWN,20K LB ULTIMATE LOAD WITH Y-BALL CLEVIS, 1x GENERIC STRAIN CLAMP)	95.9946	Each	3	Edit Assembly...	0.0000	0.0000	0.0000	Yes			
4	A-3-11.0 CONDUCTOR ASSEMBLY	INCLUDES (10X SUSP INSUL, Y-BALL, CLAMP, BOLT ON VANG, 1" MACHINE BOLT, 4X4 SQ WASHER)	188.3890	Each	6	Edit Assembly...	0.0000	0.0000	0.0000	Yes			
5	A-3-11.0 STATIC ASSEMBLY	INCLUDES (1XBOLT ON VANG, 2X1"X1/4" MACHINE BOLET, 1XY CLEVIS-BALL, 1XSUSP CLAMP, 2X4"X4" SQ WASHER)	0.0000	Each	5	Edit Assembly...	0.0000	0.0000	0.0000	Yes			
6	A-3-11.0 CROSS TIE ASSEMBLY	INCLUDES (4XCLEVIS THIMBLE, 4X7/16" PREFORMED GRIP, 4OXFT 7/16" GUY WIRE, 4XBOLT ON VANG STATIC, 8X1"X1/4" MACHINE BOLT, 16X4"X4" SQ	0.0000	Each	6	Edit Assembly...	0.0000	0.0000	0.0000	Yes			
7	6FT LOG ANCHOR ASSEMBLY	INCLUDES (1x 6ft LOG ANCHOR, 1x ANCHOR ROD, 2x SQUARE CURVED WASHERS)	24.5224	Each	4	Edit Assembly...	0.0000	0.0000	0.0000	Yes			
8	161KV POLY STRAIN ASSY	INCLUDES (1x 161KV POLY STRAIN INS,1x DE CLAMP, 1x Y-BALL CLEVIS)	0.0000	Each	3	Edit Assembly...	0.0000	0.0000	0.0000	Yes			
9	STATIC STRAIN CLAMP ASSEMBLY	INCLUDES (1x STATIC STRAIN CLAMP WITH EYE SOCKET, 1x Y-BALL CLEVIS)	0.0000	Each	2	Edit Assembly...	0.0000	0.0000	0.0000	Yes			
10	7/16in SP DOWN GUY ASSY. W/O VANG	INCLUDES (2x 78in FIBERGLASS INSUL., 4x PREFORMED GUY GRIPS, 1x 7/16in EHS TYPE B GUY WIRE, 2x SQUARE CURVED WASHERS, 2 7/8in BOLTS	51.6806	Each	4	Edit Assembly...	0.0000	0.0000	0.0000	Yes			
11	161KV PORC STRAIN ASSY	INCLUDES (12x INSULATOR,SUSPENSION,10",PORCELAIN,1x DE CLAMP, 1x Y-BALL CLEVIS)	226.0668	Each	3	Edit Assembly...	0.0000	0.0000	0.0000	Yes			
12	69KV SUSP. INS. STRING ASSEMBLY	INSULATOR,SUSPENSION,10",PORCELAIN,CHOCOLATE/BROWN,20K LB ULTIMATE LOAD WITH Y-BALL CLEVIS, GENERIC SUSP. CLAMP	79.9955	Each	3	Edit Assembly...	0.0000	0.0000	0.0000	Yes			
13	138KV SUSP. INS. STRING ASSEMBLY	INSULATOR,SUSPENSION,10",PORCELAIN,CHOCOLATE/BROWN,20K LB ULTIMATE LOAD WITH Y-BALL CLEVIS, GENERIC SUSP. CLAMP	127.9928	Each	3	Edit Assembly...	0.0000	0.0000	0.0000	Yes			
14	161KV SUSP. INS. STRING ASSEMBLY	INSULATOR,SUSPENSION,10",PORCELAIN,30,000# ULT.,5-3/4"X 10" BALL & SOCKET TYPE,ANSI CLASS 52-5,USAS-70,GRAY,6/PKG WITH Y-BALL CLEVI	159.9910	Each	3	Edit Assembly...	0.0000	0.0000	0.0000	Yes			
15	10.5ft STD. H-FRAME ASSEMBLY	INCLUDES (1x 10.5ft H-FRAME TOP ASSY., 1x BUCKET OF BOLTS)	2199.1396	Each	2	Edit Assembly...	0.0000	0.0000	0.0000	Yes			
16	STATIC SUSP. CLAMP ASSEMBLY	INCLUDES (1x STATIC SUSP. CLAMP WITH EYE SOCKET, 1x Y-BALL CLEVIS)	0.0000	Each	2	Edit Assembly...	0.0000	0.0000	0.0000	Yes			
17	A-3-9.7S (LD09) HPI ASSY.	INCLUDES (3x POLY. HPI, ALL BOLTS AND WASHERS)	557.5500	Each	5	Edit Assembly...	0.0000	0.0000	0.0000	Yes			
18	STD. H-FRAME GROUND ASSEMBLY	INCLUDES (2x GROUND RODS WITH CLAMPS AND CONNECTIONS, 8lbs COPPER CONDUCTOR)	0.0000	Each	6	Edit Assembly...	0.0000	0.0000	0.0000	Yes			
19	14.5ft STD. H-FRAME ASSEMBLY	INCLUDES (1x 14.5ft H-FRAME TOP ASSY., 1x BUCKET OF BOLTS)	2918.5535	Each	2	Edit Assembly...	0.0000	0.0000	0.0000	Yes			
20	A-3-9.3S-ASSEMBLY	INCLUDES (1x 4.5ft DAVIT ARM, 1x 5.5ft DAVIT ARM, 1x 6.5ft DAVIT ARM, 1x BUCKET O' BOLTS)	1749.0500	Each	4	Edit Assembly...	0.0000	0.0000	0.0000	Yes			
21	69KV HPI POLYMER ASSEMBLY	INCLUDES (1x 69KV HORIZ. POST POLYMER INS., 2x BOLTS, 2x WASHERS, 1xSUSP. CLAMP)	185.8500	Each	5	Edit Assembly...	0.0000	0.0000	0.0000	Yes			
22	138KV HPI POLYMER ASSEMBLY	INCLUDES (1x 138KV HORIZ. POST POLYMER INS., 2x BOLTS, 2x WASHERS)	248.6969	Each	5	Edit Assembly...	0.0000	0.0000	0.0000	Yes			
23	SINGLE POLE GROUND ASSEMBLY	INCLUDES (2x GROUND RODS WITH CLAMPS AND CONNECTIONS, 8lbs COPPER CONDUCTOR)	0.0000	Each	6	Edit Assembly...	0.0000	0.0000	0.0000	Yes			
24	7/16in SP DOWN GUY ASSY.	INCLUDES (1x BOLT ON VANG, 2x 78in FIBERGLASS INSUL., 4x PREFORMED GUY GRIPS, 1x 7/16in EHS TYPE B GUY WIRE, 2x SQUARE CURVED WASHE	51.6806	Each	6	Edit Assembly...	0.0000	0.0000	0.0000	Yes			
25	A-3-9.7S (LD05) HPI ASSY.	INCLUDES (3x POLY. HPI, ALL BOLTS AND WASHERS)	557.5500	Each	5	Edit Assembly...	0.0000	0.0000	0.0000	Yes			
26	COND. SUSP. CLAMP ASSY.	INCLUDES (1x STATIC SUSP. CLAMP WITH EYE SOCKET, 1x Y-BALL CLEVIS)	0.0000	Each	2	Edit Assembly...	0.0000	0.0000	0.0000	Yes			
27	138KV BUND. SGL. STRING DE ASSEMBLY	INSULATOR,SUSPENSION,10",PORCELAIN,GRAY,30K LB ULTIMATE LOAD WITH Y-BALL CLEVIS, GENERIC SUSP. CLAMP	188.3890	Each	7	Edit Assembly...	0.0000	0.0000	0.0000	Yes			
28	138KV BUND. HPI POLYMER ASSEMBLY	INCLUDES (1x 138KV HORIZ. POST POLYMER INS., 2x BOLTS, 2x WASHERS, 2X GENERIC SUSP. CLAMP, 1X VERTICAL BUND. YOKE)	248.6969	Each	6	Edit Assembly...	0.0000	0.0000	0.0000	Yes			
29	3 TAG HOLDER ASSY	INCLUDES (1x 3 TAG HOLDER, 2x 1/4 LOCK NUT, 2x 1/4 FLAT WASHER, 2x 1/4 BOLT)	0.0000	Each	4	Edit Assembly...	0.0000	0.0000	0.0000	Yes			
30	2 TAG HOLDER ASSY	INCLUDES (1x 2 TAG HOLDER, 2x 1/4 LOCK NUT, 2x 1/4 FLAT WASHER, 2x 1/4 BOLT)	0.0000	Each	4	Edit Assembly...	0.0000	0.0000	0.0000	Yes			
31	4 TAG HOLDER ASSY	INCLUDES (1x 4 TAG HOLDER, 2x 1/4 LOCK NUT, 2x 1/4 FLAT WASHER, 2x 1/4 BOLT)	0.0000	Each	4	Edit Assembly...	0.0000	0.0000	0.0000	Yes			
32	A-3-10.41 (NO STATIC AND GROUND)	INCLUDES (ALL NUTS, BOLTS, WASHERS, 1x CROSSARM, 1x X-BRACE)	1118.0900	Each	11	Edit Assembly...	0.0000	0.0000	0.0000	Yes			
33	1/2in SP SPAN GUY ASSY	INCLUDES (2x 78in FIBERGLASS INSUL., 6x PREFORMED GUY GRIPS, 1x 7/16in EHS GUY WIRE)	51.6806	Each	3	Edit Assembly...	0.0000	0.0000	0.0000	Yes			
34	7/16in SP SPAN GUY ASSY	INCLUDES (2x 78in FIBERGLASS INSUL., 6x PREFORMED GUY GRIPS, 1x 1/2in EHS GUY WIRE)	51.6806	Each	3	Edit Assembly...	0.0000	0.0000	0.0000	Yes			
35	9/16in SP SPAN GUY ASSY	INCLUDES (2x 78in FIBERGLASS INSUL., 6x PREFORMED GUY GRIPS, 1x 9/16in EHS GUY WIRE)	51.6806	Each	3	Edit Assembly...	0.0000	0.0000	0.0000	Yes			
36	69KV POLY STRAIN ASSY	INCLUDES (1x 69KV POLY STRAIN INS,1x DE CLAMP, 1x Y-BALL CLEVIS)	0.0000	Each	3	Edit Assembly...	0.0000	0.0000	0.0000	Yes			
37	1/2 SINGLE GUY SCREW ANCHOR ASSY	INCLUDES (1x SCREW ANCOR, 1x 1/2 HSS GUY WIRE, 2x 60in FIBERGLASS INSULATORS)	79.3000	Each	3	Edit Assembly...	0.0000	0.0000	0.0000	Yes			

Expanded View... Hide Material in Line Save Cancel

Add Assembly 'Stock Number' in Libraries

Cable Properties (From file "o:\j. doll\pls users group presentation\pls-cadd (nesc_2012)\libraries\ku-guy.cab")

	Label	Stock Number
1	7/16 DG	DOWN GUY 7/16in 7ST EHS
2	9/16 DG	DOWN GUY 9/16in 7ST EHS
3	1/2 SG	SPAN GUY 1/2in 7ST EHS
4	7/16 SG	SPAN GUY 7/16in 7ST EHS
5	9/16 SG	SPAN GUY 9/16in 7ST EHS
6	1/2 DG,2 FGI,6` LOG	1/2 DG,2 FGI,6` LOG
7	1/2 DG,3 FGI,6` LOG	1/2 DG,3 FGI,6` LOG
8	1/2 DG,4 FGI,6` LOG	1/2 DG,4 FGI,6` LOG
9	1/2 DG,2 FGI,10` LOG	1/2 DG,2 FGI,10` LOG
10	1/2 DG,3 FGI,10` LOG	1/2 DG,3 FGI,10` LOG
11	1/2 DG,4 FGI,10` LOG	1/2 DG,4 FGI,10` LOG
12	1/2 DG,2 FGI,DBL HLX	1/2 DG 2 FGI DBL HLX
13	1/2 DG,3 FGI,DBL HLX	1/2 DG,3 FGI,DBL HLX
14	1/2 DG,4 FGI,DBL HLX	1/2 DG,4 FGI,DBL HLX
15	1/2 DG,2 FGI,TRI HLX	1/2 DG,2 FGI,TRI HLX
16	1/2 DG,3 FGI,TRI HLX	1/2 DG,3 FGI,TRI HLX
17	1/2 DG,4 FGI,TRI HLX	1/2 DG,4 FGI,TRI HLX
18	1/2 DG,2 FGI,EXPANSION	1/2 DG,2 FGI,EXPANSION

Tracking and Reporting, As Builts, GIS

- Material Associated with Structures in .xml Export
- Report on usage to date by:
 - Item Number
 - Manufacturer
 - Material Type
- Retain Existing Material Data in GIS or other Database Platform

Power Line Systems

IT'S ALL ABOUT YOUR POWER LINES

Advanced Sag & Tension

IEC

FAC 008/009

NESC

Materials Management

LiDAR Modeling

Structural Analysis

PLS-CADD

CSA

Pole Analysis

Transmission

NERC Ratings

Distribution

Line Optimization

The End

Project Estimating

FAC 003

ASCE

Joint Use

PLS-POLE

GO95

Vegetation Management

1000+ Users in 100+ Countries

Storm Hardening

Company Logo

IEEE

Line Ratings

Contact Information

TOWER

Drafting